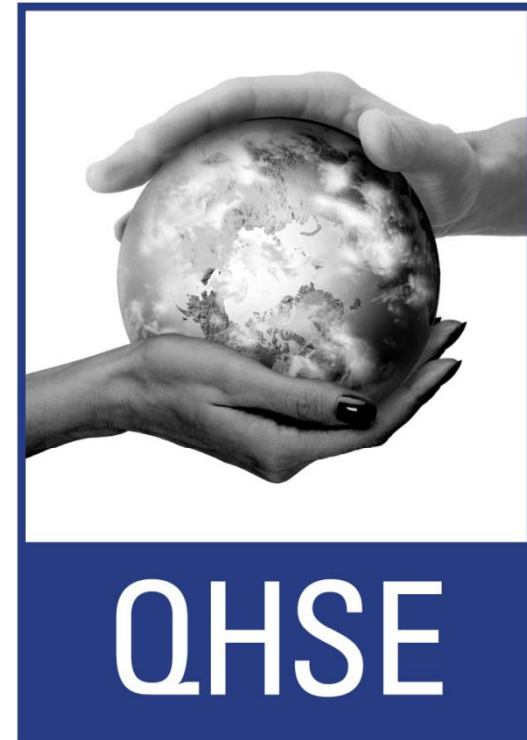


# DOIRC Meeting

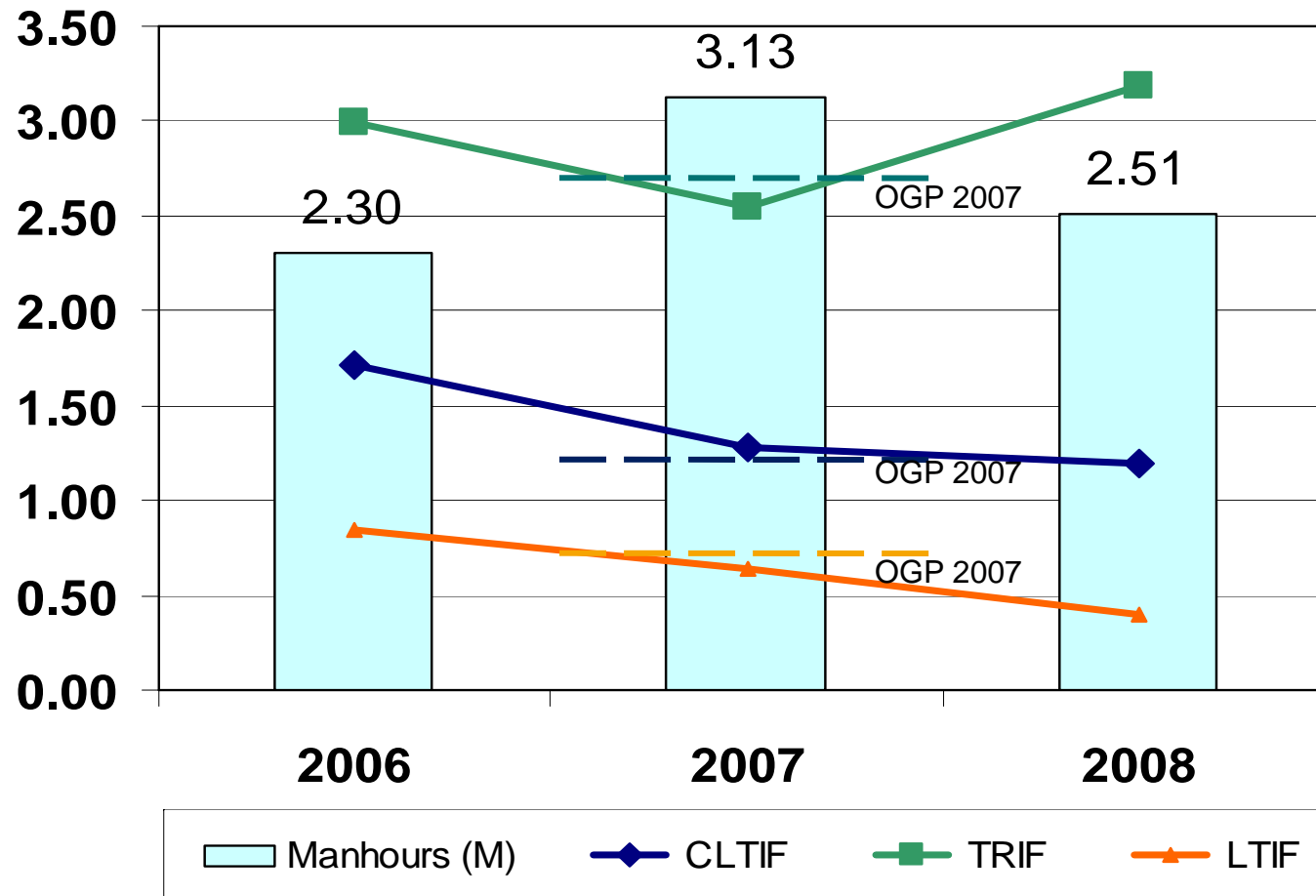
Nov 2008

## 2008 QHSE Results



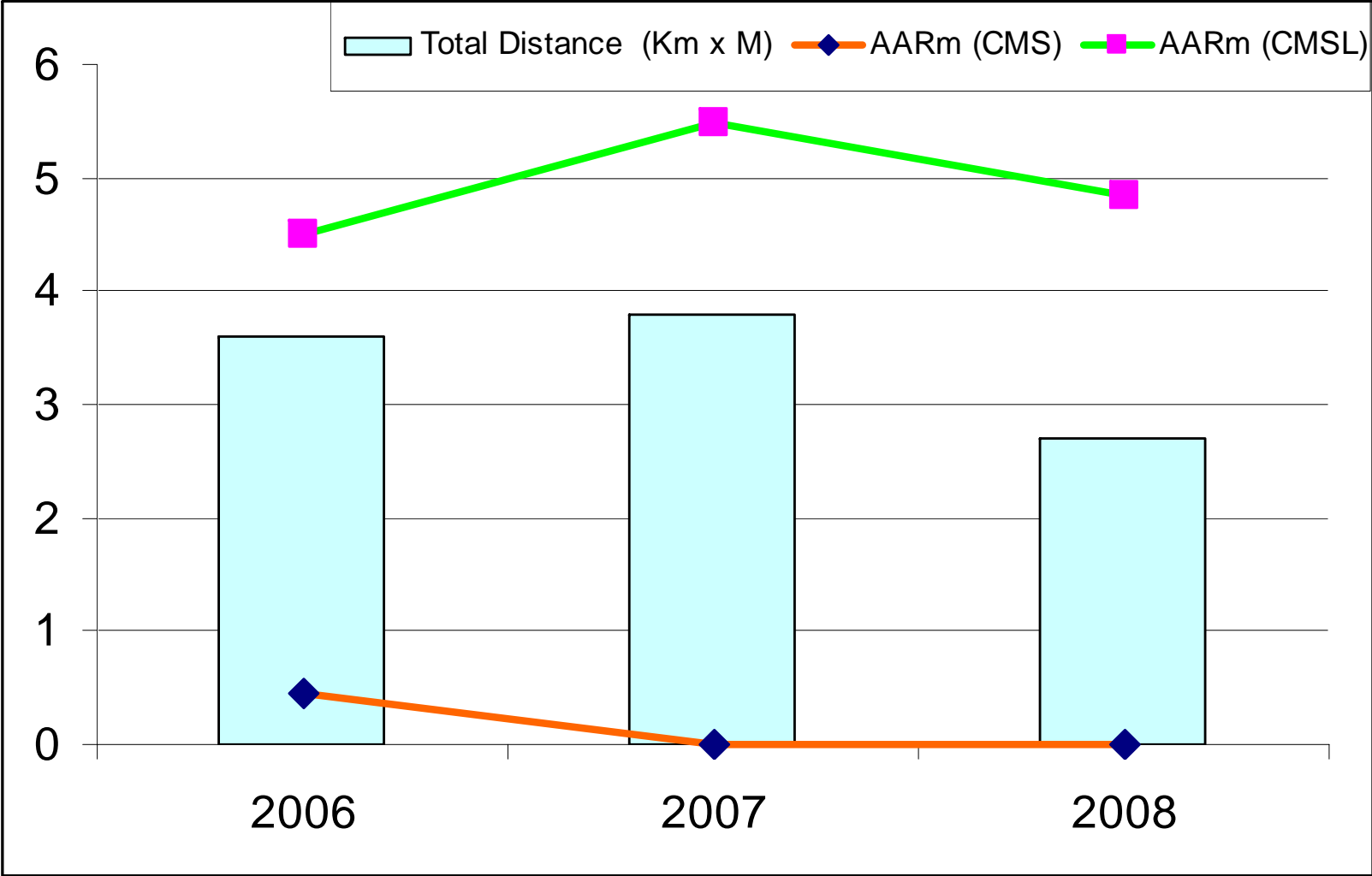
**Schlumberger**

# 2008 QHSE Results: Personnel



OGP Indicators	2006	2007	2008
CLTIF - Combined LTI Frequency = (CLTI / 1,000,000 manhours)	1.71	1.28	1.19
TRIF - Total Recordable Incident Frequency (TRI / 1,000,000 manhours)	2.99	2.55	3.19
LTIF - LTI Frequency = (LTI / 1,000,000 manhours)	0.85	0.64	0.4

# 2008 QHSE Results: Automotive Accidents



# Prevention – Mitigation Plan

## Injury

- Awareness campaign
- Information meetings
- Re-assess Training needs
- Increase Management visibility
- HARC updating campaign
- Implement Schlumberger/customers combined workshops

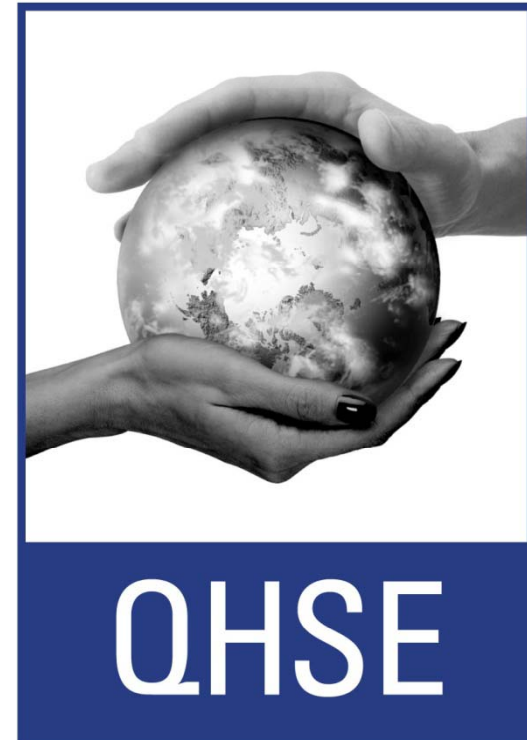
## Automotive Accidents

- Re-enforcing driving habits analysis
- Increase Commentary drive frequency
- Specific Professional Drivers Training program
- E-Journey Management Center

DOIRC

PRESENTATION  
Restricted Work Case

Sep 15<sup>th</sup>, 2008



**Schlumberger**

# **Incident Investigation**

***Restricted Work Incident***

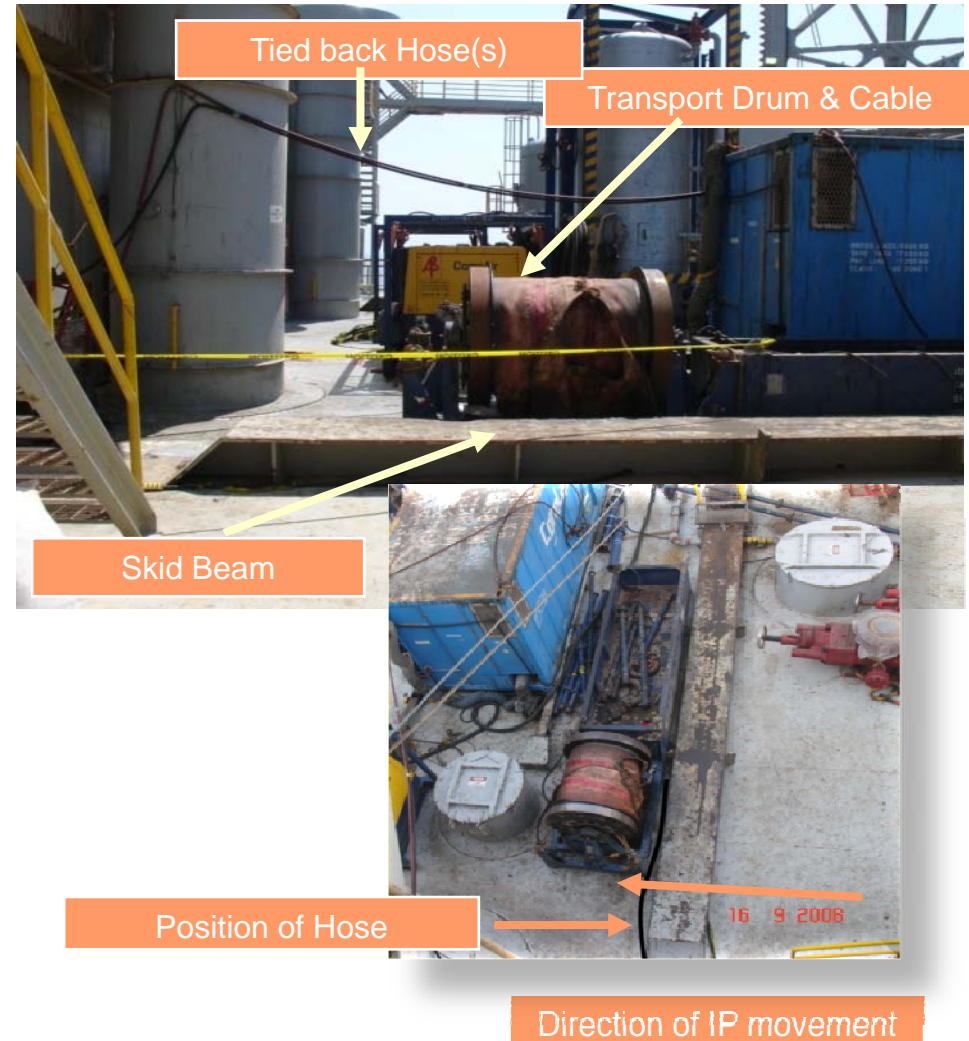
***Wireline Segment***

***Offshore Qatar***

***Sep 2008***

# Accident Description

- During a change of wireline cable operation, the IP was on the main deck to check the alignment of securing bolts between the cable drum and the transportation skid.
- At 8:00 AM, IP stepped up and over the skid beam towards the cable drum. He placed his right foot on a hose on deck without noticing it. The IP did not see the hose on the other side of the beam.
- The cable slipped / rolled, the IP lost his balance and sat on the beam, due to the unexpected weight transfer onto his right Knee. After a few seconds, the IP stood up and did not feel any pain and IP went back to work. 30 minutes later, IP felt pain in his right knee and he went to the rig medic. Medic recommended to send IP back to Doha for further medical evaluation.



# Accident Risk Classification

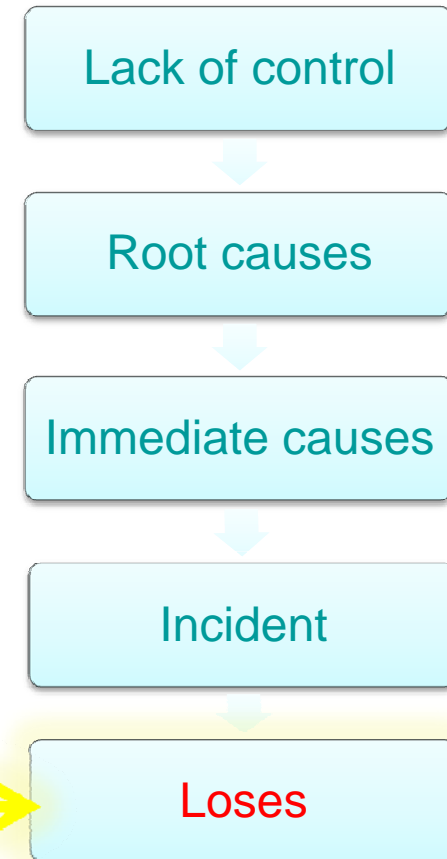
- Severity: Serious
  - pain on the knees while walking
  - 1 RWDC
- Likelihood: Low

✓ -4 -Low

		Potential Risk				
-25 to -20	<b>Extreme</b>	Evacuate the zone and or area/country				
-16 to -10	<b>High</b>	Do not take this risk				
-9 to -5	<b>Medium</b>	Demonstrate ALARP before proceeding				
-4 to -2	<b>Low</b>	Proceed carefully, with continuous improvement				
-1	<b>Insignificant</b>	Safe to proceed				
		MITIGATION				
Control Measures		Very Low	Low	Medium	High	Very High
PREVENTION		1	2	3	4	5
		LIKELIHOOD				
Light	-1	-1	-2	-3	-4	-5
Serious	-2	-2	-4	-6	-8	-10
Major	-3	-3	-6	-9	-12	-15
Catastrophic	-4	-4	-8	-12	-16	-20
Multi Catastrophic	-5	-5	-10	-15	-20	-25

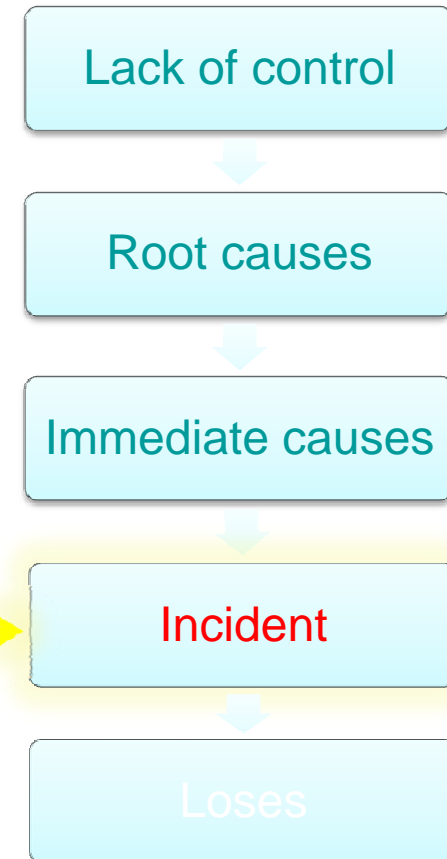
# Accident Investigation

- The Loss:
  - Personnel Injury – Twisted/rolled right knee resulting in pain on the knee while walking.



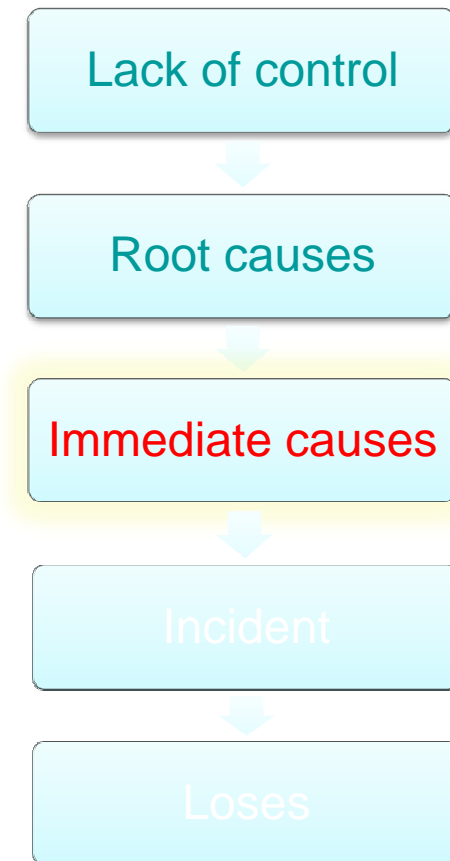
# Accident Investigation

- The Incident:
  - Crew Chief rolled/twisted his right knee when he stepped over the cantilever skid beam in the main deck and placed his foot on the hose laying beside it.



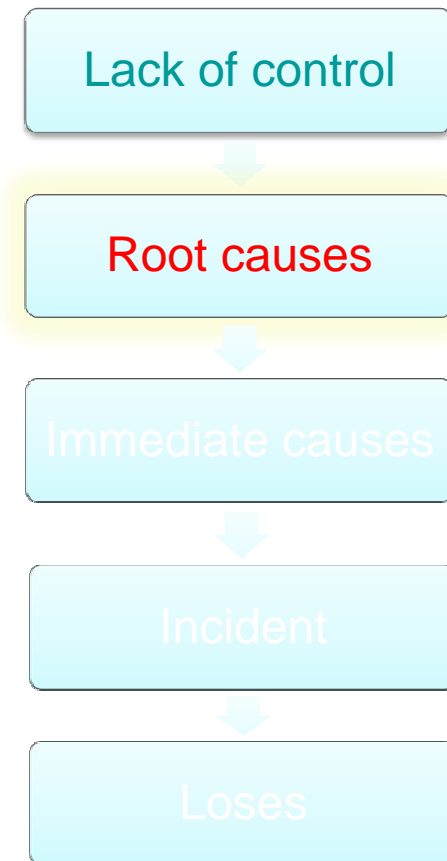
# Accident Investigation

- Immediate Causes:
  - Fall on Same Level (Slip & Fall, Trip Over)
  - Poor Housekeeping / Disorder
    - Hose on deck unsecured / obstruction / clutter
  - Inadequate Job/Work Preparation / Planning



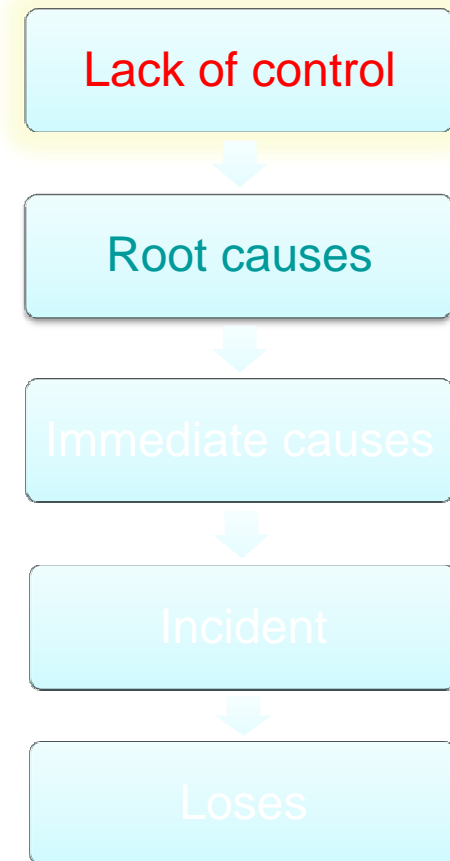
# Accident Investigation

- Root Causes:
  - Failure to Identify Hazard / Risk
  - Lack of knowledge - Lack of situational awareness
    - Improper Motivation – attempt to save time or effort
    - Inadequate Work Instructions
    - Inadequate identification & Evaluation of loss exposures



# Accident Investigation

- Lack of Control:
  - Performance Monitoring & Improvement
  - Commitment & Leadership
  - Risk Management Process



	<b>Action Items</b>	<b>Who</b>	<b>When</b>	<b>Status</b>
1.	Incident Review with Team	OPM	18 Sept	Done
2.	Review HARC for Cable Change Task	FSM	19 Oct	Done
3.	Initiate Stand Down Communication	QHSE Mgr	126Oct	Done
4	Review QHSE Certifications	OPM	4 Oct	Done.
5	Pilot combined HSE workshop	QHSE Mgr	15 Nov	Pending
6	Re-Launch “Pinched fingers” campaign	QHSE Mgr	09 Nov	Pending
7	HARC “updating” campaign	OPM	1 Nov	Pending
8	Assessing extra/complementary HSE Training	QHSE Mgr	30 Nov	Pending